



Invacare®

# Matrix® Flo-tech™ Plus

Deep contoured large cushion with fluid sac

**matrix**  
SEATING SERIES

**INVACARE**  
Yes, you can.

The *Invacare* **Matrix Flo-tech Plus** cushion incorporates a fluid sac integrated in the cushion seat well. The positioning of the fluid sac targets the ischial tuberosities, helping to significantly reduce pressure in this vulnerable area. This delivers superior levels of protection for those patients identified as being at High Risk of developing pressure ulcers.

## Features and Options



### Ingress resistant cover

Cover is two-way stretch, water-resistant and vapour-permeable. Cover features an anti-slip base with carry handle.



### Available in 77 sizes

The *Invacare* **Matrix Flo-tech Plus** is available in a range of 77 sizes, from 14-24" widths and 13-22" depths. (See prescription chart for details).



### Integral sag compensator option

Option to compensate the sag in wheelchair seats, to ensure the cushion is correctly presented.



### Ultra-fresh™ added to all cushions for antimicrobial and odour protection

Antimicrobial treatment has been added to all **Flo-tech** foam to help make it resistant to the growth of odour causing bacteria. Helps provide longer lasting freshness.

### Contoured seating surface

Offers improved stability and postural support. Also delivers a greater degree of pressure distribution compared to that of a flat surface. The castellations of the cushion allow slight movement which in turn reduces shear and friction forces. The deeper moulded foam offers greater protection to those who are considered clinically obese, or individuals who would benefit from a higher sitting position.

## Technical data

For more comprehensive pre-sales information about this product, including the product's user manual, please visit [www.invacare.co.uk](http://www.invacare.co.uk)

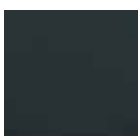
	Various sizes	Height	Total product weight	Max. user weight <sup>1</sup>	Max. cleaning temperature	Warranty
<b>Matrix Flo-tech Plus</b>	 A range of 77 sizes	 103 mm	 2.5 kg	 152 kg (24 stone) 191kg (30 stone) for sizes 22" width/depth and above	 80°	 3 years

Manufactured to European Standards:  
BS EN 1021-1 Cig, BS EN 1021-2 Match  
and BS 7176 (Crib 5)

1. Guide maximum user weight limits are set assuming that the cushion selected is of appropriate width and depth for the intended user/s.

## Colours

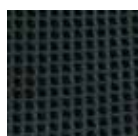
Black Smooth



Black wipedown



Black spacer fabric



Baltic Blue

