

# MicroCell Companion

Ultra Low Profile Alternating Cushion

**MediSmart**  
Technologies Ltd

*'Making Sense of Care'*



To bed or  
not to bed?  
That is the  
question...

Retro fits  
to any rise  
recliner!

- ✦ Patented MicroCell air cell design (25mm x 20mm) gives an ultra thin cushion which ensures that the patient's/service user's position is not impacted.
- ✦ Compelling pressure mapping results whilst offering increased comfort level.
- ✦ The PU film air cell bank is fitted into a fully welded Dartex cover which is both water proof and vapour permeable.
- ✦ Adjustable straps allow easy fitting to most existing rise/recliner chair.
- ✦ Designed and manufactured in the UK



## What is different?

The patented ultra-low profile 'microcell technology' is the result of many years of in house Research and Development at the cutting-edge of pressure relief solutions. This led to the development of ultimate, ultra-low pressure relief system now available to retro fit on existing rise and recline chairs, either in full length (70 microcells) or the lower seat (45 microcells)

The 'super quiet' plug "n" play, easy to use pump automatically adjusts to the patient/ client's weight which means no adjustments required. The Medismart ultra low profile Microcell Companion system can be left running 24/7 and has safety features which include audible and visual alarms in case of emergency, .e.g., a sudden power cut.

The accompanying pressure mapping results indicate the effectiveness of the Medismart ultra low profile Microcell Companion when used on a standard rise/recline chair. Currently, the system can be manufactured in two sizes, i.e., full size covering the full length of the riser/recliner chair and a 'two thirds size' covering the seat and leg/heel areas.

Early feedback and evaluations have shown the system to be very comfortable for the users whilst at the same time providing pressure relief.

## When to use?

- Emergency situations that require an instant solution
- Pro-chair (recliner) Users who refuse to sleep in their beds

## Clinical claims

- Pressure sore healing
- Pressure sore prevention
- Improved Skin condition

## Benefits

- Offers comfort during use
- Prevention of pressure sores
- Helps heal pressure sores
- Help with improving skin condition
- Easy to use following simple instructions
- Can be retrofitted to most chairs
- Saves money, especially in emergency situations
- Delivers instant benefits where and when required

***“By using this [Microcell Companion] we have probably saved the NHS a cost of an admission and the emotional stress to the user and family.”***  
***—Senior O.T. in the South West***

## Why was it designed and manufactured?

Although it is not always encouraged by therapists for clients and patients to spend 24/7 in a rise/recliner chair rather than in a bed-the facts show that many prefer to. Hence there was a realized need to provide a suitable support surface for these individuals.

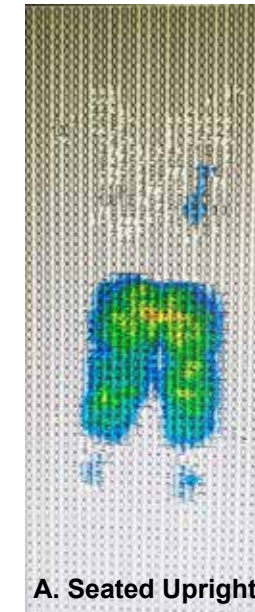
### It works:

One recent case study outlines the Medismart ultra low profile Microcell Companion being used on a challenging 80 year old service user who had insisted on using her recliner chair as a bed with subsequent risk to her health and comfort.

## Pressure Mapping Results



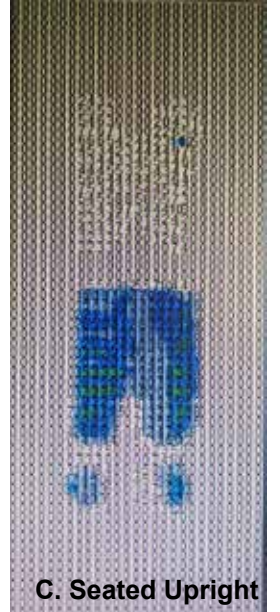
**Standard Recliner Pressure Mapping**



The pressure mapping taken using the chair and MicroCell overlay shown in the photos on the next page prove without a doubt the clinical effectiveness of the dynamic overlay when used on a standard rise / recline nursing chair.

On the left hand side (A,B) is mapping for the chair as supplied without any special measures.

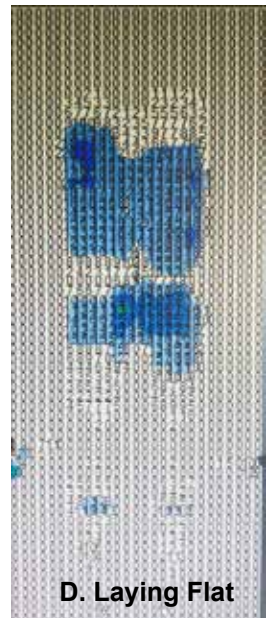
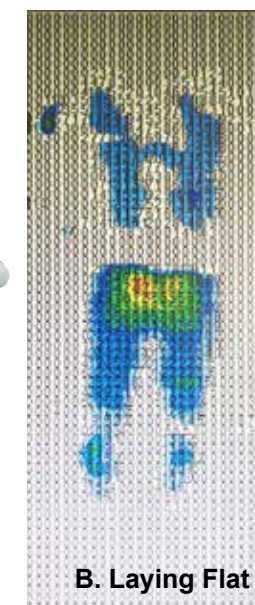
**Companion Fitted Pressure Mapping**



On the right hand side (C,D) is the chair with the MediSmart Dynamic Recliner Overlay installed.

The top images (A,C) are of the chair in an upright position whilst the lower images ( B,D) are of the chair laid flat.

With the addition of the Companion Cushion the pressure has been redistributed accordingly to ensure effective pressure relief.



# Control Units

## Universal Pump



Adjustable 20-80mmHg  
Use with any Medismart mattress or cushion  
Plug and Play design  
Very low power usage

## G1 Pump



Fixed pressure 60mmHg  
Very low power usage  
Plug and Play design  
Simple to use



2/3 version:-  
x45 air cells



Full length version:-  
x70 air cells



## SPECIFICATIONS

	Full Length	2/3 Length
Number of Air cells	x70	x45
Dimensions	1800 x 500 x 20mm	1100 x 500 x 20mm
Air Cell Material	300um PU film	300um PU film
Cover Material	Dartex Performance 602	Dartex Performance 602
Max User Weight	150kg (23st)	150kg (23st)

## Medismart Technologies Ltd

310-312 Dallow Road,  
Luton, Bedfordshire,  
LU1 1TD

T. 01582-344974  
W. medismart.co.uk  
E. sales@medismart.co.uk